

# Calibration Certificate

Part Number: 721A2601

Description: Micromate with DIN Geophone

Serial Number: UM16052

Calibration Date: NOV 30 2021

Calibration Reference Equipment: SRV-AFR 714J7401

*Instantel certifies that the above product was calibrated in accordance with the applicable Instantel procedures. These procedures are part of a quality system that is designed to assure that the product listed above meets or exceeds Instantel specifications.*

*Instantel further certifies that the measurement instruments used during the calibration of this product are traceable to the National Institute of Standards and Technology; or National Research Council of Canada. Evidence of traceability is on file at Instantel and is available upon request.*

*The environment in which this product was calibrated is maintained within the operating specifications of the instrument.*

*Please note that the sensor check function is intended to check that the sensors are connected to the unit, installed in the proper orientation and sufficiently level to operate properly. This function should not be confused with a formal calibration, which requires the sensors be checked against a reference that is traceable to a known standard. Instantel recommends that products be returned to Instantel or an authorized service and calibration facility for annual calibration.*

Calibrated By: \_\_\_\_\_



Xiaoming Yang

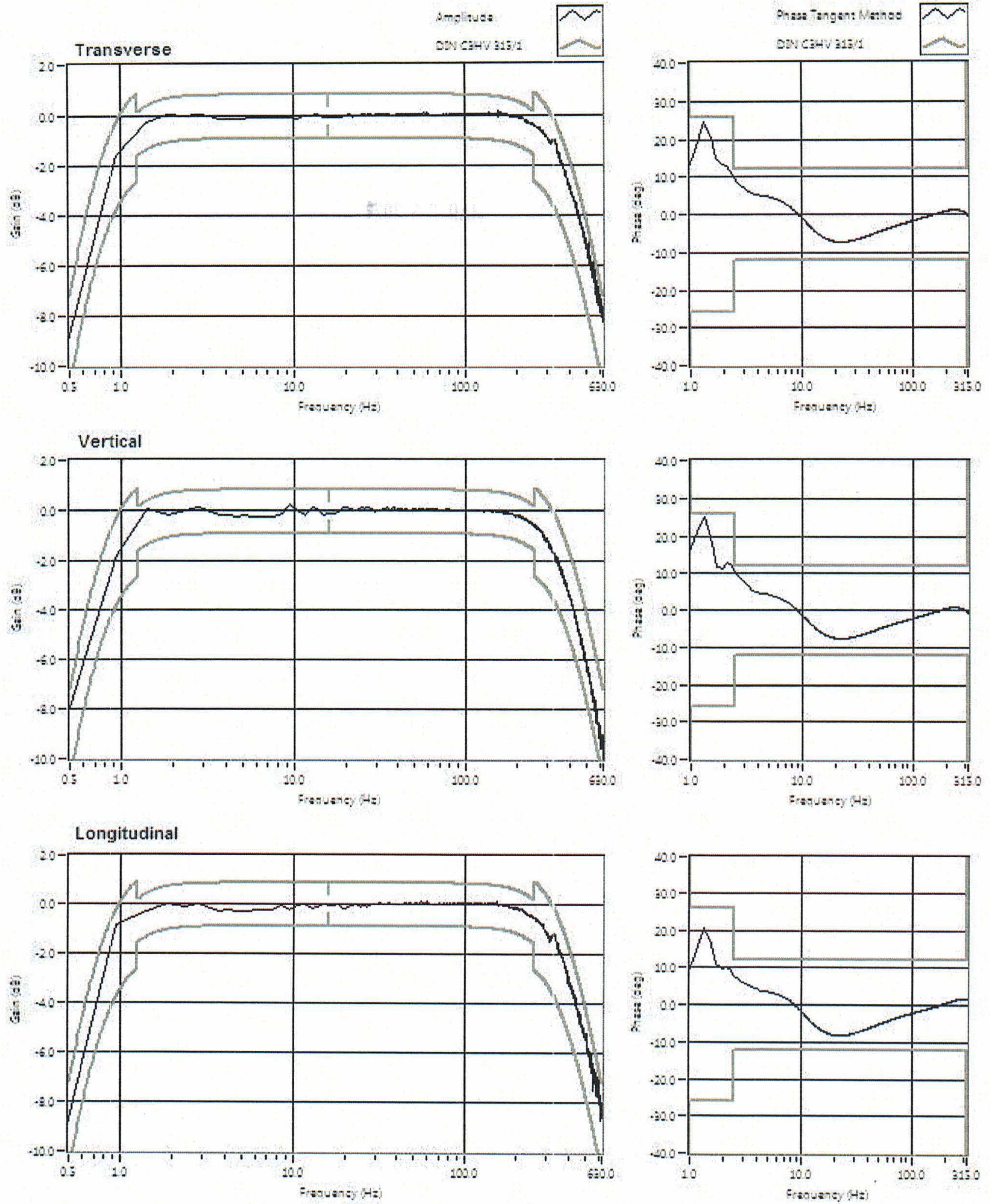


**Instantel®**

309 Legget Drive, Ottawa, Ontario, K2K 3A3, (613) 592-4642



## Frequency Response of UM16052





# Calibration Certificate

Part Number: 721A2601

Description: Micromate with DIN Geophone

Serial Number: UM16256

Calibration Date: NOV 30 2021

Calibration Reference Equipment: 714J7402

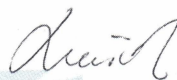
*Instantel certifies that the above product was calibrated in accordance with the applicable Instantel procedures. These procedures are part of a quality system that is designed to assure that the product listed above meets or exceeds Instantel specifications.*

*Instantel further certifies that the measurement instruments used during the calibration of this product are traceable to the National Institute of Standards and Technology; or National Research Council of Canada. Evidence of traceability is on file at Instantel and is available upon request.*

*The environment in which this product was calibrated is maintained within the operating specifications of the instrument.*

*Please note that the sensor check function is intended to check that the sensors are connected to the unit, installed in the proper orientation and sufficiently level to operate properly. This function should not be confused with a formal calibration, which requires the sensors be checked against a reference that is traceable to a known standard. Instantel recommends that products be returned to Instantel or an authorized service and calibration facility for annual calibration.*

Calibrated By: \_\_\_\_\_



Xiaoming Yang

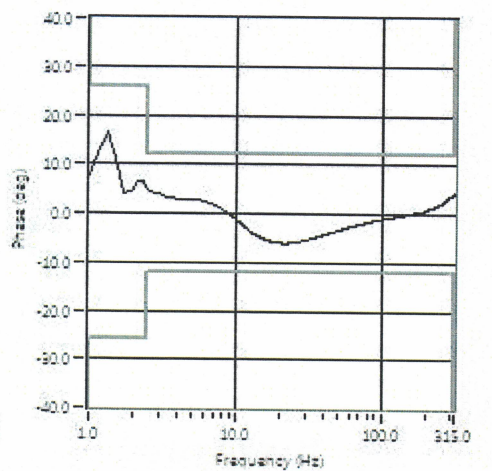
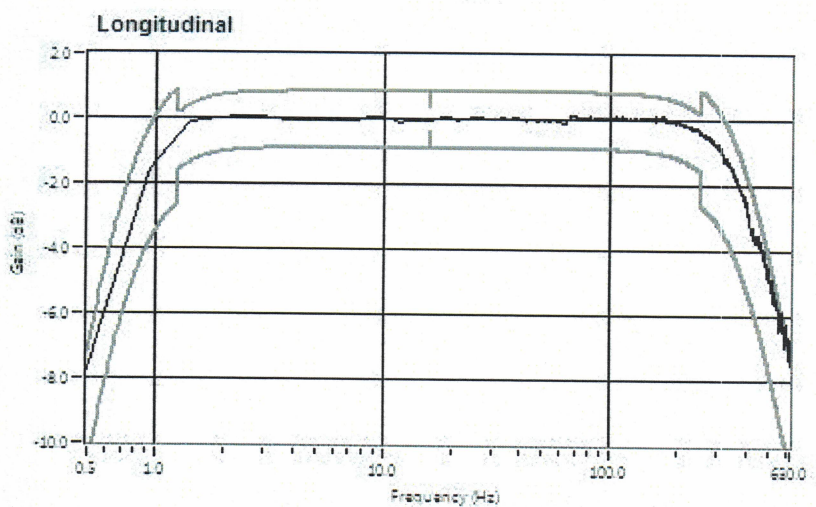
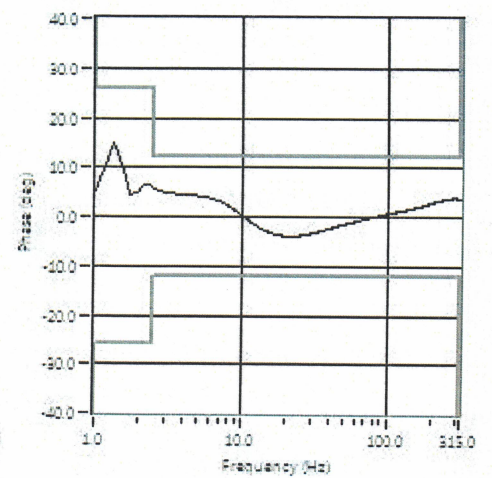
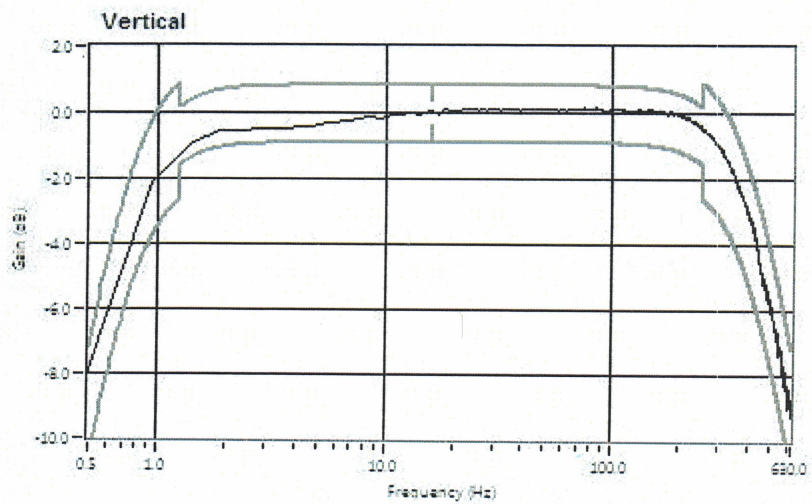
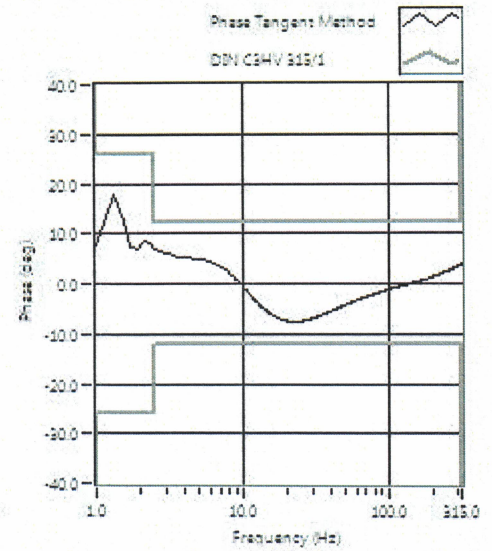
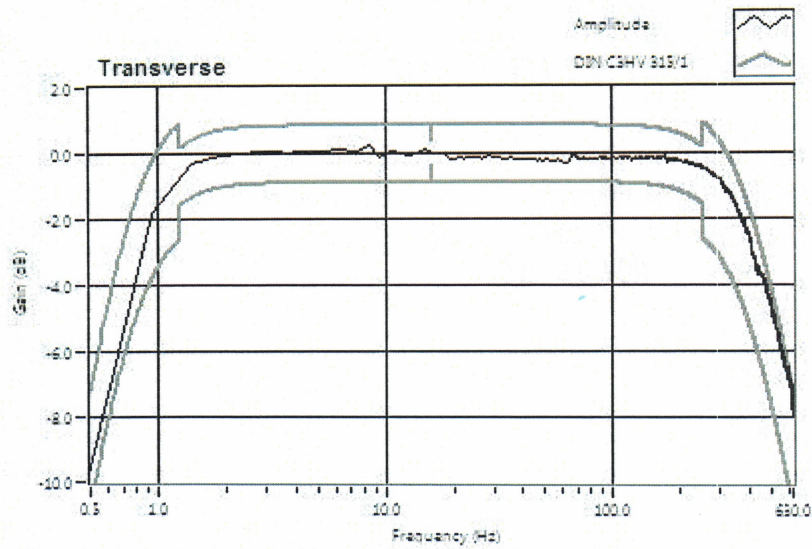


**Instantel**

309 Legget Drive, Ottawa, Ontario, K2K 3A3, (613) 592-4642



# Frequency Response of UM16256





# Calibration Certificate

Part Number: 721A2601

Description: Micromate with DIN Geophone

Serial Number: UM16257

Calibration Date: NOV 30 2021

Calibration Reference Equipment: 714J7402

*Instantel certifies that the above product was calibrated in accordance with the applicable Instantel procedures. These procedures are part of a quality system that is designed to assure that the product listed above meets or exceeds Instantel specifications.*

*Instantel further certifies that the measurement instruments used during the calibration of this product are traceable to the National Institute of Standards and Technology; or National Research Council of Canada. Evidence of traceability is on file at Instantel and is available upon request.*

*The environment in which this product was calibrated is maintained within the operating specifications of the instrument.*

*Please note that the sensor check function is intended to check that the sensors are connected to the unit, installed in the proper orientation and sufficiently level to operate properly. This function should not be confused with a formal calibration, which requires the sensors be checked against a reference that is traceable to a known standard. Instantel recommends that products be returned to Instantel or an authorized service and calibration facility for annual calibration.*

Calibrated By: \_\_\_\_\_



Xiaoming Yang

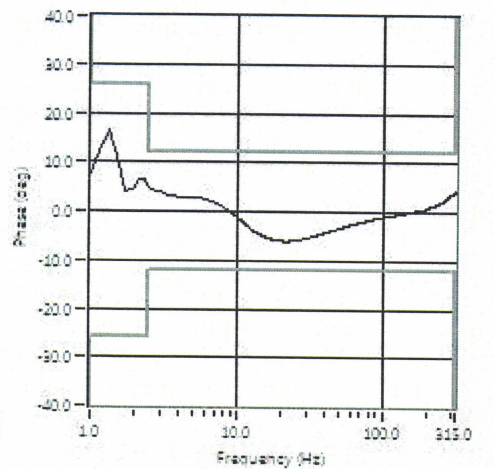
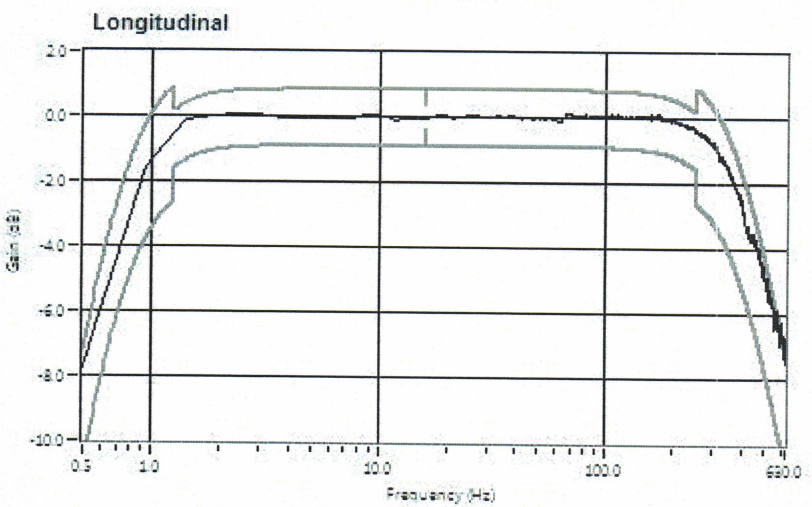
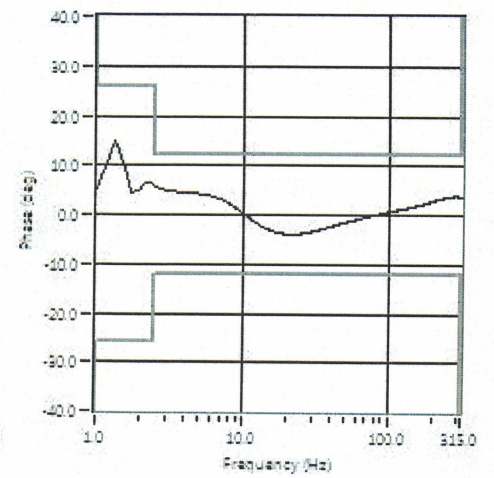
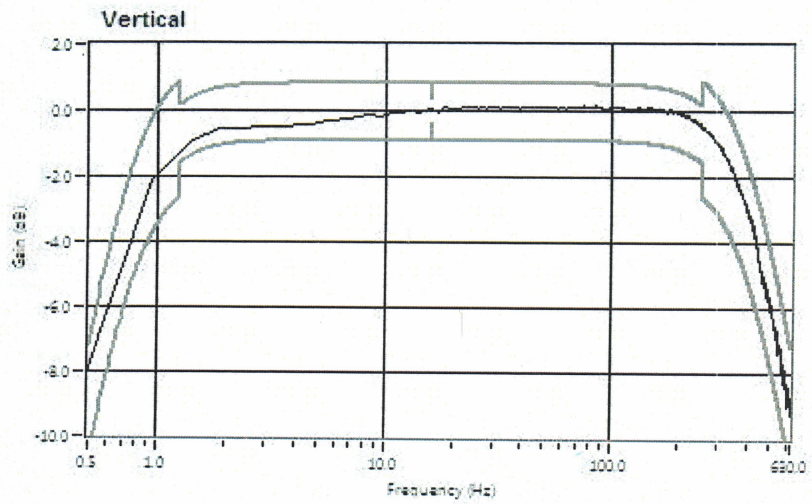
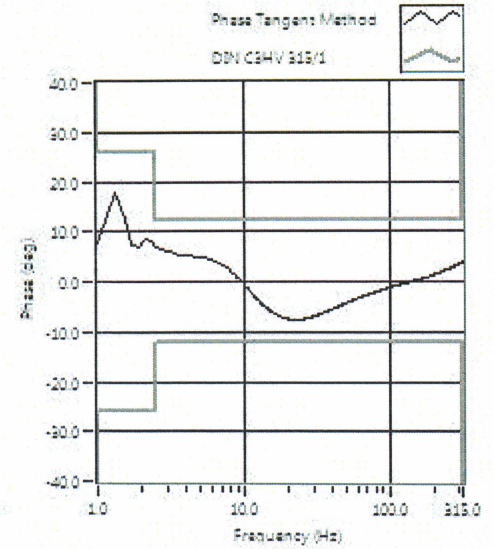
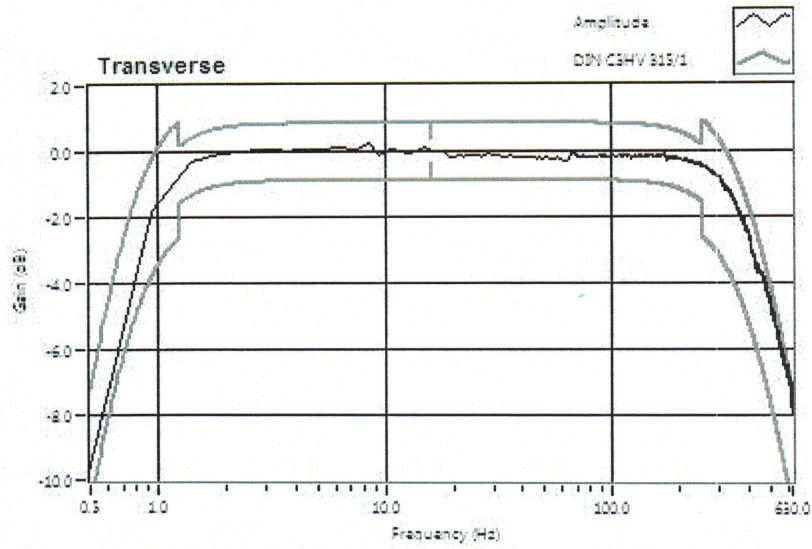


**Instantel®**

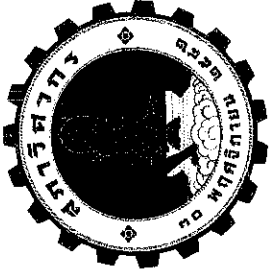
309 Legget Drive, Ottawa, Ontario, K2K 3A3, (613) 592-4642



# Frequency Response of UM16257







## สภากวีศวก

ตามพระราชบัญญัติศวก พ.ศ. ๒๕๕๒  
ออกโดยอนุบัญญัติไว้เพื่อแสดงว่า

บริษัท กรีน เอ็นไว เอ็นจิเนียริง จำกัด

ได้รับอนุญาตประกอบวิชาชีพวิศวกรรมควบคุม

เลขทะเบียน ๑๕๖๕/๒๒

ตั้งแต่วันที่ ๑๖ สิงหาคม ๒๕๖๗ ถึงวันที่ ๑๕ สิงหาคม ๒๕๗๐

ศาสตราจารย์ ดร. นพ.

(นายชเนต วิระศิริ)

นายกสภาวิศวกร